

# Welcome to the

# TOWN TIMES



5 October 2004

www.petawawa.ca

## Message From The Mayor, Bob Sweet



Welcome to Edition 3 of the TOWN TIMES. As with the previous two, I hope that you will find it informative. Whether you are new to the Town or a seasoned resident, it is our intent that you will learn something new about what's happening in the Town since our last publishing.

As a long time resident of

the Town, and with you, I have seen much growth and improvement in the past few years. With Council's guidance and your support, the Town will continue along this encouraging path. In the coming months, we will see the development of commercial properties along Petawawa Boulevard and beyond, adding to our ever growing business community. A drive around town highlights the continued growth in residential properties. The two newest subdivisions - Highland Park, off of Civic Centre Road and the Seigel development off of Woodland Crescent are a testament to the appeal Petawawa has for those seeking to reside here.

Since last November's election, Council has had a

busy agenda. With the recent approval of the Town's official plan, it is now our task to put the proper zoning in place to reflect the policies approved for the Town.

We have established two new Committees of Council - a Community Health Committee and a Forestry Committee. Their terms of reference are presented on page 10.

New water regulations - notably Bill 170 which has great implications for areas not on municipally-supplied water, has serious implications for all of Renfrew County but for portions of our Town as well. In addition, the government's commitment to completely ban the spreading of sludge from septic tanks has placed all municipalities



with septic tanks, desperately seeking solutions. Without any provincial funding for sewage plant upgrades, this government policy will continue to challenge us as we try to find an appropriate solution.

Congratulations are extended to the members of the former Civic Centre Board

who proposed the EMERALD NECKLACE TRAIL SYSTEM for the Town's 2000 millennium project and to all the members of the Town and surrounding area who contributed to its development. We have learned that this system of Trails has been chosen to receive the Canadian Parks and Recreation Association 2004 Award of Excellence for Innovation. The award will be presented at the annual Canadian conference in Halifax later this month. See the complete story on page 9. It is truly inspiring to see residents and tourists alike making great use of this breathtaking Millennium Trail for exercise, relaxation and even the occasional wedding.

This past spring saw changes to the position of Base Commander. Lt. Colonel McBride and his wife Julie have decided that Petawawa was the place for them and chose to retire here. We welcome them and are honoured to count them as new "settlers".

On behalf of all Town residents, I extend our warmest welcome to L.Col. Dave Rundle, his wife Ann and their children to Petawawa. We hope their posting here will be a great one.

Over the past years, the Town and the Base have had an enviable relationship working together on many projects. This strong and viable relationship will continue to grow with the support of L. Col. Rundle as we prepare for the 100th Anniversary of Canadian Forces Base Petawawa in 2005.

I invite all of you to come out to visit the Town's newly expanded Library. For those of you who have had the opportunity to tour the new facility, I am sure you will agree that the building is wonderfully spacious and will offer better resources and act as a cultural centre for the community. Congratulations to past

Councils who had the foresight to ensure a reserve fund which has allowed us to pay for the Library without any tax increase. Thank you to all who have spear-headed the fund raising efforts to raise funds for the interior furnishings. As usual, we salute all of you who have made donations to this important community resource and who continue to support its ongoing fund raising efforts.

## Message From The Base Commander, LCol Dave Rundle



I am attempting to get out and meet as many people that work on the Base as possible. In addition to this, I have had the pleasure to meet many individuals from the local communities. In all cases, I am very impressed with the professionalism of all. It is evident to me the pride that those serving in the CF and those that support us in many capacities, have in Petawawa. Our soldiers contribute to world peace and security around the world.

It is here in Petawawa that the soldiers train for their diverse missions. It is Petawawa that soldiers deployed,

Having just completed two months as the Base Commander, I would like to pass on a few words.

First, let me state what an honour it is to serve in this capacity. My first few months have been extremely busy.



call home. The place they look forward to coming home to. In just a few months, it is easy for me to understand why. The Ottawa and Petawawa Rivers offer scenery that would impress most adventurers. The communities

offer recreation and sporting activities that are enviable. The Base/community relationship is solid. I am very impressed with the synergy of efforts from all in making life here more pleasant in a variety of ways. From providing social programs for those in need, to celebrating events such as CF Day and the Ironman competition, the ability for people to give for others is foremost.

As we begin a busy training period, which will culminate with the deployment of our soldiers to Afghanistan, it is with a secure knowledge that we do so with unity in purpose and support from all. This unity is key to the preparations for the Base's centennial celebrations in 2005. Many people are involved in the upcoming events. It will be just one more reason for us all to come together and have a good time. I invite you all to get involved, and book your calendars for the many events planned.

Thank you all for your support.



## News From The Building Inspectors



Randy Mohns

**We keep on growing and growing and growing...**

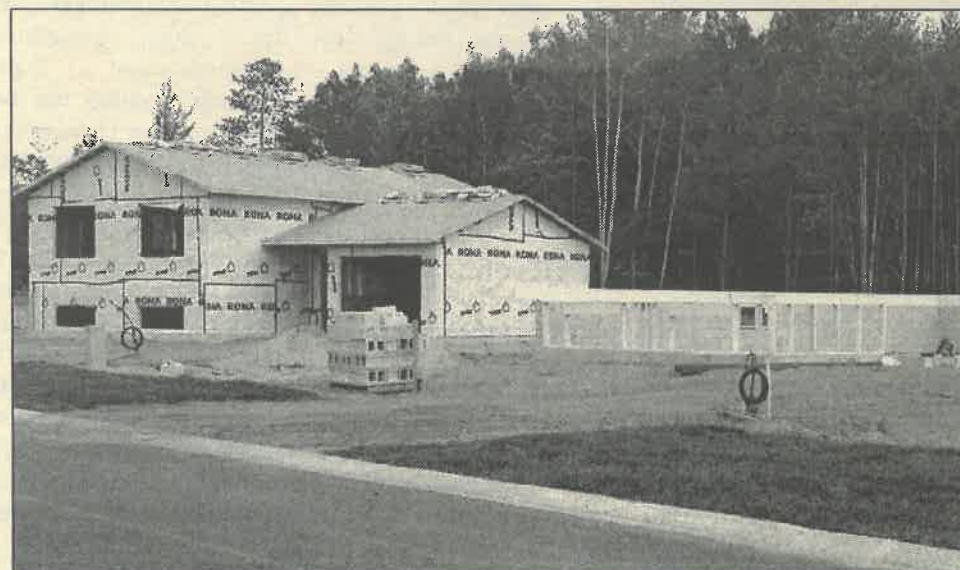


Richard Bechamp

As you drive around the town, you can note the increase in both residential and commercial growth. The estimated value of buildings constructed in the first eight months of 2004 was more than \$10-million.

The table below gives you a comparison of some of the figures for the last four years.

Type of structure	# of permits in 2004 (Jan to Aug)	Value	# of permits in 2002 (entire year)	Value	# of permits in 2001
Multiple Residential & Alterations	2				
Single Family Dwellings	38		53	\$6,605,000	28
Single Family Additions/Alterations	21		15	\$324,000	12
Garages and Carports	38				
Accessory Buildings	13				
Pools	23		31	\$193,380	20
Commercial			4	\$3,231,000	3
Commercial Additions	4		2	\$175,000	2
Other categories	24		79	\$316,550	77
Septic Systems	33				
<b>Total</b>	<b>196</b>	<b>\$10,260,138</b>	<b>184</b>	<b>\$10,844,930</b>	<b>142</b>



## Crime Prevention: A Year Round Theme



SSgt. Dave Hurteau, OPP

The Officers at the Upper Ottawa Valley Detachment of the OPP would like to remind you to think about crime prevention year round, whether it involves your vehicle, residence, business or cottage/hunt camps.

### REMEMBER:

- Vehicles that are left unattended should always be locked up and or have valuables removed
- Keep the grass cut in the summer, and the yard snow plowed in the winter
- Pick up your mail regularly and cancel the paper if you will be away
- Property such as bicycles, boats, ATV's and snowmobiles should either be placed out of site or secured, and garage doors kept closed, so passing motorists do not see your valuables
- Remove tools that could assist the criminals in breaking into or damaging your property.
- Do you have working locks on your windows, doors, and garages
- Criminals do not like to work in places that they could easily be seen.
- Outside lighting, both front and back is a wise investment as are timers programmed to turn on your lights and radio.
- It is important to create the impression that your home or other property is lived in even when it's not.

Check out all our releases at [www.crimealerts.net](http://www.crimealerts.net)

## Ontario Crime Control Commission Awards for Excellence

Since 1997, the Ontario Crime Control Commission has been the proud sponsor of the Award of Excellence For Fighting Crime, given annually to those who have made outstanding contributions to crime control and community safety.

Nominated by Ontario's municipal councils, police services and Members of Provincial Parliament, the Award of Excellence has been granted to over 600 groups and individuals across the province including police services and their members, community organizations such as Mothers Against Drunk Driving and Phone Busters, and individual volunteers who work hard to keep their communities safer.



The Mayor and Council of Petawawa nominated four of the recipients of this year's Crime Control Commission Awards of Excellence. Joining Petawawa councillors Tom Mohns (front left) and Treena Lemay (front right) are: (back left to right) the UOV OPP Crime Unit of Dave Howat, Tracey Brants, Pat Smith and Jamie Trader; (front second from left, left to right) Jim Hemlin, the Pembroke Renfrew County Crime Stoppers represented by Chair Ron Spurr and COGECO Cable TV Manager Mike Tharby, who accepted the award on behalf of his staff.



# News from Public Works

## GETTING READY FOR WINTER

Although we don't relish the thought of winter, the Public Works Department has already started their preparations. As a matter of fact, the sand supplies for the winter have recently arrived.

In order to work together to ensure our roadways are safe and clear, the staff at Public Works would like to remind you of the following:

- Make sure you place green carts and other recycling containers inside the outer edge of the snow bank to prevent them from being hit with flying snow.

- It is prohibited to place snow or ice on the plowed sections of the roadways.

- Take care when clearing snow to avoid placing snow in such a way that it obstructs or damages street / highway signs.

- Please do not pile snow near fire hydrants. It's crucial to firefighters that hydrants are easily seen from the street and that nothing obstructs their access.

## FACTS TO PONDER:

- It takes 6 hours, with crews on 5 routes to snow plow the approximately 130 kms. of roads and the 55 kms. of sidewalks within the Town and on the North and South Town sites

- Salting or sanding application only on the same roads and sidewalks takes half the time

- Four snow plows and an articulated loader with a two plow are used for winter road clearance and sand/salt application. During the remainder of the year, the plows are stored and the trucks are used for other regular duties.

- The newest plow/salt/sander spreader dump truck was purchased in 2003 for \$223,000. It replaced a 1987 truck. The average life span of such a combination vehicle is 12 to 15 years. (see photo)

## WHAT YOU SHOULD KNOW IF YOU ARE ON MUNICIPAL WATER

### Frozen Water Service Policy

1. When the Town of Petawawa Works Department responds to a "frozen water service" call outside of normal working hours and discover that the frozen pipe is in



the individual's residence, the resident will be assessed a charge to cover all of the Town's labour costs.

2. Works Department employees will only respond to frozen water service calls between the hours of 7:30 a.m. and 9:00 p.m.

3. The Works Department employees will only be able to perform very minor plumbing to adapt to their thawing machine. If substantial plumbing is required, the resident must make arrangements with their own plumber to make the required modifications.

4. Please follow the instructions of the employees following a thaw, especially in regards to leaving water trickling if a refreeze is possible. If for any reason, the employees have to make a repeat visit, the resident will be assessed all the labour costs associated with

re-thawing the line. The complete policy is available from the Town offices.

## MAIL BOXES ON TOWN STREETS AND ROADS

The Town's Roads Public Works Department will replace or repair any mailbox post that has been physically damaged by snow removal equipment (not flying snow) - provided the box has been erected in a method approved by the Post Office and the Town of Petawawa.

2. When reconstructing a road, the Town will remove all mail boxes on that road and re-install them when construction is completed.

3. Since the Town will not accept responsibility for improperly installed mail boxes, call before you plan to put up a new box for advice and a drawing of the correct placement.

## Septage - from the County's Perspective...

Those of you living in areas without sewers, no doubt have heard the Ontario Government has put all municipalities on alert that stringent new guidelines for the handling and disposal of septage waste and sludge will soon be enforced.

As the largest county in the province, and with a significant rural population, this issue is of great concern to all involved in Renfrew County government. It was for this very reason that the Town of Petawawa hosted a demonstration of a Septage Receiving System on August 11, 2004.

This demonstration drew a large number of Mayors, Reeves, and senior staff from over 10 local municipalities. We are all concerned with this issue, and this was evident by the large turnout.

Although that particular demonstration did not provide the answer for the unique situation of Renfrew County, be assured that we will continue to investigate solutions for this problem. The County of Renfrew has begun the process of conducting a Feasibility Study for our area and Petawawa residents will be kept informed of the progress as it is made.

## RECRUITMENT OF TOWN OF PETAWAWA FIRE FIGHTERS:

If you live in the Town of Petawawa and:

- are over the age of 20;
- willing to be on standby every 8 weeks;
- willing to train at least 4 - 6 hours a month;
- willing to complete a 40 hour recruitment seminar;
- willing to attend fires and related calls when paged;
- possess or willing to obtain a DZ driver's licence;
- willing to commit to the department for 5 years;
- not on deployment for more than 3 months at a time;
- are interested in becoming a volunteer fire fighter....

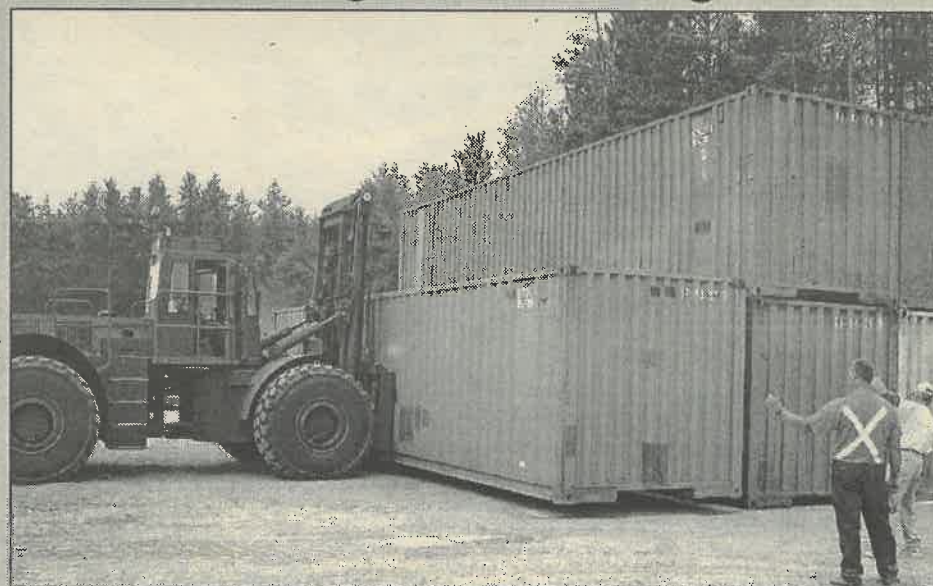
Then pick up an application at the municipal office located at 1111 Victoria Street, Petawawa.

The application should be completed, with any pertinent supporting documentation attached, and returned to the municipal office.

Visit us on the web at [www.petawawa.ca/protect/fire](http://www.petawawa.ca/protect/fire)

*The primary mission of the Town of Petawawa Fire Department is to provide fire protection services and education programs to protect the lives and property of the residents from the adverse effects of fires, sudden medical emergencies or exposure to dangerous situations/conditions created by man or nature.*

## New Fire Fighter Training Centre



The Town of Petawawa Fire Department, with assistance from Public Works and 2 Service Battalion Supply and Transport Company, recently assembled six sea containers at the Public Works yard to construct the first county Fire Fighter Training Centre. The containers, two high and three deep, are currently being transformed into a 24' by 40' house, complete with furniture, room partitions, multiple staircases and two full storeys. The facility is expected to be fully operational by October/November 2004, and can be used by fire fighters from departments throughout the county to maintain fire fighting skills including search and rescue and confined space entry. The building can be filled with smoke and heat to simulate a real fire, and room partitions can be rearranged to prevent personnel from becoming accustomed to the layout of the "house". A pre-fabricated Fire Fighter Training Centre costs approximately \$200,000 - the town Fire Department project components were purchased for \$25,000, a budget item approved by council last year.



# The old Cemetery behind All Saints Anglican Church

If you've been on the Millenium Trail behind All Saints Church, you'll note a small, fence-enclosed cemetery.

Research has uncovered some interesting information and the Town has decided to place a sign at the site - with a history of the cemetery on it.

In the event that you ever wondered about the cemetery and its history, here is a summary of it.

Consecrated in 1890, it was used for burials from 1891 to 1950. Plots were provided free of charge and maintenance presumably was to be provided by relatives or descendants of the deceased.

Church records indicate

that the following persons were buried in the cemetery: Story, Alexander - died March 14, 1891, aged 70; Stoughten, Sarah - daughter of Solomon Devine - died December 30, 1891, age 40; Wilson, Robert - died July 14, 1893; Brannan, Hester Ann - daughter of George Brannan - died August 5, 1894 - aged 4 years, 2 months, 28 days; Brennan, Andrew Thomas - son of Andrew - died January 13, 1897 - aged 6 mos.; Brannan, Andrew - infant son of Andrew - died September 7, 1900; Duval, Ernest, Percival - infant son of Charles and Martha - died September 24, 1901, aged 2 weeks; Kean, Ernest - died

December 1903, aged 70; Kearney, Edith, infant daughter of William - died April 7, 1904, aged 2 weeks; Kean, Alice - died August 18, 1905 - aged 34; Dunlop, Lila, infant daughter of William - died August 16, 1906 - aged 4 months, 4 days.

Notes indicate that the Department of National Defense used the burial ground as a military cemetery as early as 1907 - two years after the establishment of Camp Petawawa. The first military interment was July 1907 and the last known one was September 12, 1950.

A DND drawing, which is a tracing dated June 19,

1930, shows that the military reserved 2 sections or rows, each with 18 plots of 12 feet x 6 feet.

Since the drawing was a tracing, it is assumed that the original must have been dated much earlier.

Formal notes entitled "Regulations for Engineer Services" - dated 1909, mandated provision of headstones and upkeep of grounds to come from "public funds".

Records indicate that ten military burials occurred between 1907 and 1936 - nine of which were PF servicemen, while one was a member of the CEF, WW1 and entitled to a wooden cross.

In 1951, the Church abandoned the graveyard and opened another, directly to the rear of the Church structure after the Department of Health refused to allow an enlargement of the cemetery boundaries. The property had not

been surveyed properly and a complete plan did not exist to show all of the plots.

Other reasons cited were:

- The number of unmarked graves and lack of records made it unwise to open other graves
- Ground is rocky and both difficult and costly to dig
- Soil in the new site is sandy and rock free.

In 1954, the Department of National Defense assumed some responsibility for the burial plots, providing an annual allowance of \$450 for a fence and upkeep of the site. In 1955, an agreement was signed with ALL SAINTS ANGLICAN CHURCH whereby the church would provide perpetual care and maintenance for a lump sum payment of \$375.

Since that time, care of the cemetery has alternated between the church and units from CFB Petawawa.

The known names of the

interred are listed below:

## PLOTS 1-18 - ROW 1

1 - 5. ?; 6. Martin - 1950; 7. Gnr. Dalziel, S. - RCHA - 1934 - drowned, age 35; 8. Gnr. Dyson, F.W. 3rd MED.RCA. -8-7-1928 - struck by lightning, age 20; 9. ?; 10. Stone, RD., 69th Calgary DRFT - 15 -7 - 1918; 11. Gnr. Clifton, Jack - RCHA -20 -06 -1936, drowned, age 24; 12. Smith, Charles - RCD - July 1907 - drowned, age 24; 13. Cpl. McCracken, J. RCE - 13 -07 -1912 - drowned, age 34; 14. Manley, J. CPASC - 09 -06 - 1912 - died of heart failure, age 37; 15. Gnr. East, Francis, RCHA - 25 -06 - 1911 - age 36; 16. ?; 17. Moffat, Alice - 06-04-1916; Moffat, Robert, A - 05 -12 - 1915.

## PLOTS 19-23 - ROW 2

19. Letarte, Arthur - 1950; 20. OL /Sgt. Ross - 1947; 21. Waito - 1923; 22. Shields, Benjamin - 1923; 23. Brennan, Sarol (nee Shields) and son George - 1903.

## Are You In The Right Lane??

There have been a number of reports of driver confusion and very close encounters in the turn lanes at the corner of Doran Road and Petawawa Boulevard.

To prevent heart attacks (yours or others) and road rage:

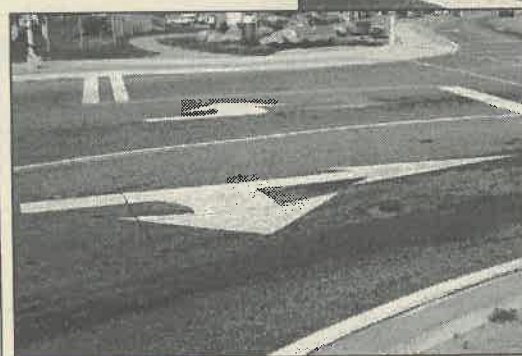
If you're going west, make sure that you are in the left turning lane BEFORE the track crossing.



See the ARROWS in left photo and follow the directional arrows on the pavement.

If you're going to Mohns Avenue or to the east, you must be in the right lane. Make sure you get into it, BEFORE the railway crossing. See the ARROW in the above picture and follow the directional arrows on the pavement.

**STAY SAFE !!!**



## PERMIT FOR RECREATIONAL BURNING

An amended burning by-law for the purpose of recreational enjoyment was recently passed by the council for the Town of Petawawa. A recreational fire is an open air fire that is set and maintained solely for the purpose of cooking food, providing warmth, and recreational enjoyment. An application to have such a fire may be picked up at the municipal offices at 1111 Victoria Street or taken off the town website. The completed application is then given to the Fire Chief or his designate for approval. A fee of \$20.00 will be charged, valid for a 12-month period.

## OUTDOOR BURNING

is only allowed:

- where indicated by lot size and location
- between the hours of 6 p.m. and 6 a.m. from October 1 to May 31
- A \$2 per day fee will be charged; permission for such burning may be granted only after a site inspection by the Fire Chief or his designate.

## TELEPHONE NUMBERS

Please Dial 9-1-1 for EMERGENCIES requiring POLICE, FIRE, AMBULANCE

Town Offices - 687-5536; FAX - 687-5973; e-mail: email@town.petawawa.ca (Administration, Building Official, By-Law Officer, Animal Control, Economic Development)  
Fire Hall - 687-8000 or 687-4759 (Non- Emergency)  
O.P.P. Office -735-0188 (Non -emergency)  
Public Works - 687-2692  
Public Works After Hours Emergency - 732-3525  
Civic Centre - 687-5678  
Library - 687-2227  
Water Plant - 687-7512  
Sewage Treatment Plant - 687-2141

Rec Plex Centre- CFB Petawawa - 687-2932  
Canada Post Office - 687-5934  
Humane Society - 588-4508  
Assessment Office (MPAC) - 1-866-296-6722  
Renfrew County and District Health Unit - 735-8666  
TELEHEALTH ONTARIO -1-866-797-0000  
Waste Recovery Centre - 735-7537  
Dundonald Hall - 687-4500  
Silver Dart Twin Arenas - 687-5511 -Ext . 6999  
South Side Community Centre - 687-2104

## ELECTED OFFICIALS

Mayor Bob Sweet - 687 - 5837  
Deputy - Mayor Ed Chow - 687 - 5723  
Councillor Tom Mohns - 687 - 2072  
Councillor Ken Pleadwell - 687 - 4950  
Councillor Treena Lemay - 687 - 4434  
Councillor Bill Ramsey - 687 - 1933  
Councillor Cy Steele - 687 - 4338



[www.petawawa.ca](http://www.petawawa.ca)

## From the desk of Economic Development...

The Economic Development Department identifies and implements a range of strategies including marketing and promotion, and advice and assistance to support local business.

Tourism promotion is one area that has been targeted as an important component of the economic development program, and the department has been supporting several initiatives in that area over the last several months.

In May, a services brochure was produced and distributed highlighting businesses of key interest to visitors, such as accommodations and food services.

We also hosted Ottawa Life magazine and were part of a feature article on the upper Ottawa Valley. July saw the arrival of 25 outdoors writers for the tri-annual conference of Ontario Out of Doors magazine.

It was a tremendous opportunity to showcase our Town, and the writers had a fabulous time seeing the area and meeting some of our local tourism operators. One feature article has already been published as a result of this visit and more

are being written, which should go a long way to putting Petawawa at the front of people's minds.

In the past several months, members of the department have met and spoken with many business owners, and we have had several new businesses open their doors.

The department revamped the on-line business directory on the website, making it easier to navigate and update.

If your business or organization isn't listed, please contact the department and we will be glad to add you.

This is a free opportunity for local businesses to promote themselves, and helps residents know what is out there.

Other promotional activities include the rebranding of our website address and staff e-mail from town.petawawa.on.ca to the petawawa.ca suffix, to make it easier to remember and to simplify communications.

You may also have seen the Town's booth at the Spring and Fall Showcase at the Civic Centre. These shows are a great way for the public to meet their councillors and the Town staff.

During the Spring Showcase, the department conducted a Gap Analysis survey to identify what businesses, services and events people would like to see in Petawawa. Thanks to everyone who participated. We received many excellent comments and suggestions

and we will be working hard to try to implement some of them.

Ongoing and future departmental initiatives include working with the CFB Petawawa Centennial

Celebration Committee and the exciting events that they are planning. The department will also be updating the Town map and brochure, as well as continuing to update the website.

## News From The Petawawa Research Forest Visitor Centre

In 2003, for the first time the Town of Petawawa along with Deep River, Laurentian Hills and the Townships of Head, Clara and Maria came together to run the Petawawa Research Forest Visitor Centre as a joint venture. It was a successful partnership, and this spring the four municipalities signed an agreement to continue running the Centre for the next five years. We also welcomed a new partner in the Friends of the Petawawa Research Forest, a not-for-profit organization working for the preservation and promotion of the Forest.

With this commitment from the partners, Natural Resources Canada, which operates the Petawawa Research Forest and maintains the property, can look at making capital improvements to the facilities. Furthermore, with the participation of the Friends of the Petawawa Research Forest, we will be able to enhance the exhibits and programming at the site. This new agreement increases our ability to promote tourism to Petawawa, as well as upgrading the Visitor Centre as a tourist attraction in itself.

The Visitor Centre offers many things for the public to enjoy and explore at no cost. You can go for a



walk along the two nature trails that take visitors around the area and highlight different aspects of the water and forest ecology, let the kids play in the two-storey tree house, or relax and have a snack at one of the picnic table areas.

The indoor and outdoor exhibits are another interesting aspect of the Visitor Centre. Although the museum was closed for repairs this season, it will reopen next year and visitors can learn about forests and local history among other things. There will also be rotating exhibits on various themes, including an art show featuring local nature artists.

Throughout the summer the Visitor Centre staff often organizes additional activities for the public. This year, kids enjoyed a day of face painting, a

firemen presentation and other fun activities, and Forest Manager Steve D'Eon took a group on a tour of old growth forest. Watch the local media for information on future events as they unfold next summer.

The Petawawa Research Forest Visitor Centre generally operates from mid to late June until Labour Day. It is located on Highway 17 just east of Chalk River. Any local business owners or organizations who are interested in having their brochures or business cards displayed at the Visitor Centre next year, or are interested in proposing a special offer to draw people to their business, are welcome to contact the Economic Development Department.

## 100th Anniversary of CFB Petawawa - 2005

Canadian Forces Base Petawawa will celebrate its 100th Anniversary in 2005 and it's a time to look back and celebrate the accomplishment of each unit. For the soldiers and their families in Petawawa it's a chance to celebrate the support they have received from the Base and the local Community over the years. The outlined plan for the Home Coming Weekend is provided below.

There will be a number of events taking place throughout the year of 2005 but our main focus will be the Canada Weekend of July 1-3, 2005. The Home Coming Weekend as it is normally called will comprise of a number of activi-



ties centered around the Town of Petawawa and Base. The planning for the event is still ongoing.

The first day celebration of the Home Coming Weekend, July 1, 2005 will include a freedom of the City Parade, Tug of War Competitions, Gun

Race hosted by the 2nd Regiment Royal Canadian Horse Artillery, Para jumpers from 3rd Battalion, The Royal Canadian Regiment, Kids Activities, an Airborne Reunion, Canadian Guards mini Reunion, Museum Grand re-opening, Street Dance and fireworks show.

The second day, the events will be more Base centered with a Pancake Breakfast kicking off the morning, Military displays as a part of our annual Canadian Forces Day, Tug of War Finals, a Second Gun Race show, and a mini tattoo.

If further questions or concerns please contact Kerri-Lee Puddister at 613-687-5511 ext. 5164.

## FYI - FOR YOUR INFORMATION

1. The O.P.P. request that you call them as soon as possible to report any incidents of vandalism with as many details as you can report.
2. If you belong to a charitable group and you want to operate any type of lottery, remember that the Province requires that you obtain a "lottery licence". To obtain information, please see Tina Spurrell or Mitch Stillman at the Town offices.
3. Check the signs - there is no passing allowed in the centre lane of Petawawa Boulevard. Please obey the speed limit.
4. The land on both sides of the Railway tracks is called the Railway right of way - and traveling on it or across the tracks is trespassing and illegal. For your safety, stay off of the tracks.
5. The Town has a new web address. For those who wish, feel free to communicate electronically with us at [www.petawawa.ca](http://www.petawawa.ca)
6. There is an after-hours phone number for Public Works emergencies. The number is included with the TELEPHONE list on p.4.
7. New tax bills will identify the percentage of your tax dollars which go to the Town, the County and the School Boards. Watch for the breakdown of the charges.
8. Maps of the Town are available free of charge at the Town offices.
9. With the passing of the Town's Official Plan, staff will begin the preparation of the Comprehensive Zoning By-Law. This zoning by-law will put the official plan into action.
10. Information about outdoor and recreational burning can be found in the new BURNING BY-LAW - available at the Town offices.
11. Recycling containers - green bins, yellow bins and blue boxes are available at the Town offices. If you move, please leave them with the old house.



**PETAWAWA**  
 DYNAMIC BY NATURE

# Petawawa Library on the move...



On October 1, 2003, the library at 16 Civic Centre Road closed and the move was begun to the Pharma Plus building on Victoria Street which was to be our temporary home for the next few months.

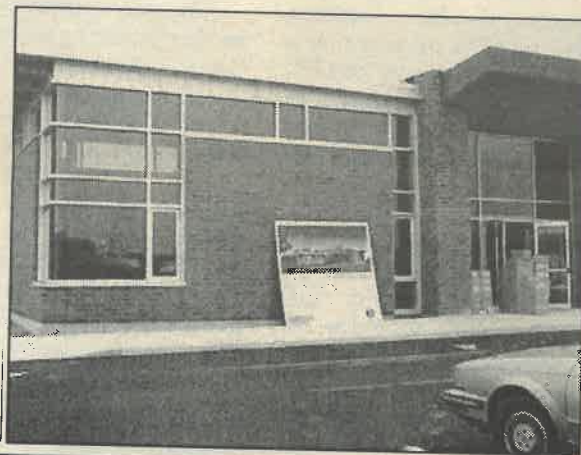


The staff worked hard and we opened again on October 20, 2003. Although we only had half the space, we still managed to provide our patrons with our usual good service. We increased our Interlibrary Loans, still offered story time and craft days. We did our best to make sure our service still met the needs of the community.

Moving day once again. The Library closed on August 2, 2004, and began the move back to the new library. The progress has been steady but slow. The official opening date was September 24, 2004.



To everyone who made this wonderful building possible, we would like to say Thank You. Without the support of council, all the fundraisers, Library Board, Civic Centre staff, volunteers, a great staff and the wonderful people of Petawawa, the building would not have been built for all of us to enjoy.



## Fund Raising

The Petawawa Library's renovations and expansion, started a year ago, are now complete.

With double the size of the previous library facility (built 22 years ago), the new library boasts new and expanded features. For example, the Rotary room, a self-contained multi-purpose room of approximately 630 square feet located in the library facility, is available for community use. Additional computers for public use, a reading area, an expanded children's section and a Teen reading section are other new features.

Fund raising in the community was essential in order to create the needed library facility. Generous donors including service clubs, businesses and individuals made funds, goods and services available to make the library a reality.

The fund raising, for the time being, is an ongoing process in order to properly equip the library. For example, the multi-purpose room requires a projection screen, the library still needs funding to purchase items such as a listening centre, computer desks, window blinds, book trucks, and a book drop receptacle. The donors for these items will be recognized by a small plaque attached to the particular item. A list of needed items is available at the library.

**DONOR'S BOOK SHELF:** Have your name or children's names displayed permanently on a book spine. A decorative bookshelf on a library wall will feature donor's names on mock book spines. For a donation of \$50, a person's or family's name will be laser engraved on a wood mock book spine. Your name will be on display for years to come as a library donor.

**PETAWAWA LIBRARY LOTTERY:** To support the library, purchase a ticket available from Library Board members or from the library staff. (See details opposite page).

# YOUR NEW



## WHAT YOUR LIB

### INTER-LIBRARY LOANS:

Patrons are able to request books not held at our library by filling out an interlibrary loan request form. We are able to search databases throughout Ontario including Toronto Reference and the Ottawa Public Library. If a book is not found in our collection, we will search further but it may incur a cost. Should this happen, the patron will always be advised first on the cost and at that time may cancel their request.

### FORMS:

You will find forms for Reserves, Inter-library Loans, and Suggestions to Purchase on our web page - [www.petawawapubliclibrary.ca](http://www.petawawapubliclibrary.ca)

### INTERNET SERVICE:

The library offers Internet computers for public use. This service is available on a first-come, first-served basis. It is free, but we do require identification and there is a charge for printing material.

### LARGE PRINT BOOKS:

The library has many large print books from our own collection and also a pool collection of the Southern Ontario Library Service.

### LOCAL HISTORY MATERIAL:

The Petawawa Public Library has a large collection of material dealing with local history. Some items may be borrowed.

### AUDIOVISUAL:

#### Talking Books:

Travelling far? Stop in at the library and take a look at our talking book collection. These are professionally recorded books-on-tape and they make a trip go a lot easier. We also have talking books for children.



# LIBRARY



## Children's Services

### CHILDREN'S STORY TIME:

This is a registered program for 3-5 year olds and runs every Wednesday morning from 10-11 a.m. The program runs from October to December and February to April. Children enjoy theme related stories, songs, finger plays and simple crafts.

### STORY CIRCLE:

This program is open to all children and will run on Saturdays at 1:00 p.m. providing we have a student. The student will read stories to the children. Story Circle runs September to mid-December and from February until the end of May. Everyone is welcome.

### READING BUDDIES:

This program will endeavour to team a child with a student for one hour a week at the library. All students who would be willing to take part in this program and provide help to a younger child, please call Mrs. Janet Coulas - 687-2227 ext. 22.

### CLASS VISITS:

We are happy to receive visits from pre-school groups and elementary classes through to Grade 8. We will assist in any way we can - stories, research, tours, books, talks. Contact the Children's Librarian Janet Coulas - 687-2227 ext. 22 to book your visit in advance.



### FUTURE PROGRAMS:

Be sure to watch for other programs happening in the children's area, Craft Days, Writing Programs, and Reading Programs such as Silver Birch and Red Maple.

## Library Lottery 50/50 draw

As part of its continuing efforts to raise money for the books and furnishings of the new library addition, the Library Board is conducting two lotteries. The first draw occurred at the opening of the Library on **September 24** with a guaranteed prize package of **\$7500** over the year.

### LIBRARY LOTTERY 50 / 50 DRAW is September 2004 and September 2005

- Only 300 tickets will be sold
- Odds are 1 : 12
- There are 24 draws for \$ 250.00 each, and one draw for \$ 1500.00
- Each ticket will be eligible for all 25 draws,
- Winning tickets will be re-entered for all future draws.
- Proceeds go to the Library for furnishings and equipment
- Regular draws - \$250.00 every second Friday at the Library
- Tickets are \$50 and available from all Board members or at the Library or Town office

***DON'T FORGET  
YOUR TICKET!***

## RARY HAS FOR YOU ...

**NEW:** Now available, Talking Books on CD.

### Videos:

The library is pleased to be able to offer to the public a large assortment of videos. Children's, How To's, Classics, Documentaries.

**NEW:** The library is now offering DVDs - some of our own, and also from a pool collection sent by Southern Ontario Library Services.

### CDs

Drop in and see our growing musical collection of CDs. We have music for everyone, from Classical to Rock.

### CD-ROMs:

Now available, a wide selection of games for all ages.

There are CD-ROMs for learning to read and cooking for children to Home Design for adults.

### Sick Kits:

Little ones not feeling great or bored? Drop in and pick up one of our Sick Kits. These kits contain different items of entertainment from books to videos to toys. Each one is different and they may be borrowed for a week at a time.

### TB Combo:

Taking a trip with little ones? May we suggest Tapes and Books? Let the children read along or look at pictures while listening. Three week borrowing period.

### FOREIGN LANGUAGE COLLECTION:

Through donations, the Petawawa Library has been able to maintain a collection of German books for both children and adults.

## DID YOU KNOW?

Membership at the Petawawa Library is free and renewable every two years. Anyone living outside the Petawawa area is welcome to use the library and pay the non-resident fee of \$25 per year. Lost cards may be replaced for a cost of \$5.

### BORROWING TIMES:

- Books - 3 weeks
- High demand books - 1 week
- Videos - 3 days no renewal
- Non-Fiction videos - 3 weeks (same as books)
- CDs and CD-ROMs - 1 week no renewal
- TB Combo (Tape and Book) - 3 weeks
- Videos/CDs/CD-ROMs - 5 per family

### LATE FEES:

#### Overdue fines are:

- Books, magazines etc. - 10 cents/day to a maximum fine of \$5.00
- Videos - \$1.00/per day to a maximum of \$10.00
- CDs and CD-ROMs - 50 cents/day to a maximum of \$5.00
- TB Combo (Tape and Book) - 50 cents/day to a maximum of \$10.00



## Great Petawawa River Duck Race - July 1, 2005



This library fund raising activity will coincide with the centennial of CFB Petawawa at the "Canada Day in The Park" Celebrations.

2000 courageous yellow ducks will make their way from the bridge to the Cat Walk area at 4 p.m. that day.

Fabulous year long prizes go to the owner of the first numbered duck across the finish line.

Watch for your chance to get your \$ 5.00 Duck "adoption" tickets this fall at the Library. They'll make great gift ideas and Christmas stocking stuffers for everyone on your list.



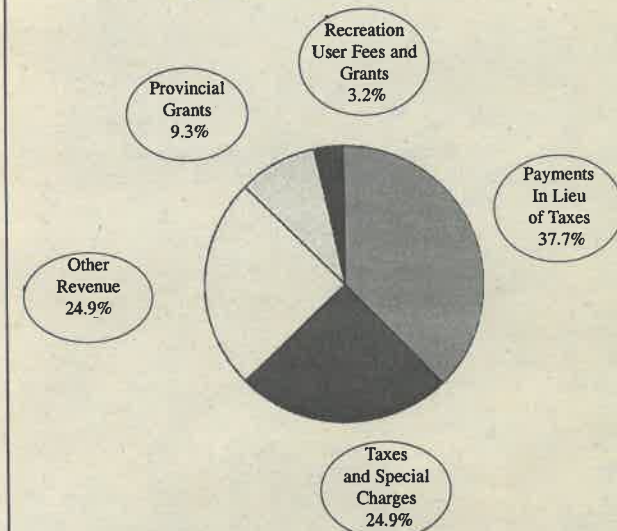
# Town Goals...

This is the third year that we have considered Goal setting to help guide our efforts and direction for the year. Keeping with our practice of reporting the status of goal attainment, as we did in the last issue, the following describes some of the directions we are particularly focusing on this year.

- Implement recommendations of the Staff review and Utilization Study
- Ensure policies are in place to deal with nuisance bears
- Work in partnership to increase the effectiveness of the Visitor Centre
- Complete library expansion project
- Work with the County to complete the stages of 3 laning of Petawawa Boulevard
- Pursue the provision of broadband, high speed internet connection for the whole Town
- Conduct Public Meeting on Open Air Burning By-Law
- Identify and pursue options for septage disposal

- Support 2005 CFB Petawawa 100th Anniversary Project
- Develop Zoning By-Law
- Continue to implement recommendations from the landscape Consultants re: the beautification strategy of the Town
- Implement recommendations from the 5 year Sidewalk installation programme
- Implement recommendations from the Tourism Study
- Review the alignment of the road into Civic Centre / Library area from the PMQs off Cartier Street
- Finalize a parking by-law
- Establishment of a water conservation policy
- Update Personnel policies to cover Professional Development for Staff
- Continue to improve the Street Lighting of the Town
- Support the efforts of the Petawawa Historical Society
- Review the grants and subsidization ratio policy for recreational groups
- Review grants policy to community or other groups
- Support the development efforts of the Petawawa Terrace project
- Monitor the VOTE 10 project with CFB Petawawa re: adoption of Base Infrastructure

## 2004 Municipal Budget Revenues \$9,596,028



## ADMINISTRATION AND COUNCIL IN A CAPSULE

### How to contact the Town Officers:

Chief Administrative Officer (CAO) - Bob Rantz  
Deputy CAO / Clerk - Mitch Stillman  
Treasurer - Dan Scissons  
Tax Collector - Ann Bain  
Receptionist - Tina Spurrell

### When are Council meetings held:

- Regular meetings of Council are held on the 1st and 3rd Mondays of each month.
- Committee meetings are the 2nd and 4th Monday of the month.
- All meetings, unless otherwise advertised, begin at 6:30 p.m. at the Town Offices - 1111 Victoria Street

### How to Obtain a Council meeting agenda:

Anyone wishing to obtain an agenda on a regular basis should advise the receptionist to ensure adequate copies are made available. Agendas can be picked up from the Town office on the Friday prior to the meeting or on the day of the meeting.

### How to obtain minutes of meetings:

Anyone wishing to be added to the mailing list for minutes is requested to provide the receptionist (Tina Spurrell) with their mailing or electronic address. Once they have been accepted by Council, the minutes will be forwarded.

### How to appear before Council:

Advise the Clerk in writing by noon (12 pm) on the Thursday prior to the Council meeting. A general description of the reason for appearing should be indicated.

### What are the Dates for Fall Leaf and Yard Waste Pick-Up?

Weeks of October 18th and 25th on the regular garbage days

### Who Do I call if I have questions about Garbage and Re-Cycling?

Any questions should be directed to the Town Offices at 687-5536 and NOT the Ottawa Valley Waste Recovery Centre. Please call immediately if there is a problem on collection day. Once the trucks are out of the Town limits, they will not return until the next collection days.

## 2004 TAX RATES FOR RENFREW COUNTY

Taxes and how much we pay are a constant source of concern for all of us.

As in the last edition, we are including these 2004 figures which have been obtained from the County of Renfrew Administration Offices.

The numbers in the last column are based on \$100,000 of assessment (set by the Municipal Property Assessment Corporation.) For example, a house in Petawawa assessed at \$100,000 would pay \$283.00 for the general government operations of the Town. The remaining monies of your tax bill are collected on behalf of and sent to the Boards of Education and the County of Renfrew.

RANKING	MUNICIPALITY	GENERAL GOVERNMENT	Per \$100,000
1	Head, Clara & Maria	0.00079930	\$80
2	PETAWAWA	0.00283402	\$283
3	Greater Madawaska	0.00328645	\$328
4	Brudenell, Lyndoch, Raglan	0.00336403	\$336
5	McNab-Braeside	0.00347751	\$347
6	Laurentian Valley	0.00367581	\$367
7	Admaston-Bromley	0.00373234	\$373
8	Whitewater Region	0.00417713	\$417
9	Horton	0.00482644	\$482
10	North Algona	0.00645837	\$645
11	Killaoe/Hagarty/Richards	0.00645908	\$645
12	Rolph Buchanan Wylie/Chalk River	0.00662284	\$662
13	Madawaska Valley	0.00694008	\$694
14	Bonnechere Valley	0.00726179	\$726
15	Town of Arnprior	0.00849931	\$849
16	Town of Renfrew	0.00913685	\$913
17	Town of Deep River	0.01161035	\$1161

If you have questions regarding your property assessment, you can make enquiries or appeals by calling the Municipal Property Assessment Corporation at 1-866-296-6722.



# Emerald Necklace Trail System update



**Campbell McKie**  
Recreation Director

## 2004 AWARD OF EXCELLENCE FOR INNOVATION

Each year the Canadian Parks and Recreation Association examines projects throughout Canada which demonstrate innovation in the provision of parks and recreation services in the area of facilities, heritage and culture, programs, parks, operations and maintenance.

Following the review this year, the Selection Committee made their choice.

On August 18th, the Town was notified that the Emerald Necklace Trail System with its planned multi-phase system of 8 types of trails, won the award.

In 1999, the members of the former Civic Centre Board made the presentation for the Trail System to be the Town's Millennium Project.

The Committee was impressed with the number of partnerships involved in its creation, from service clubs to all levels of government.

Spear-headed by the Rotary Club of Petawawa, the project was greatly assisted by the members of 2 CER and the generous donations of all those who bought metres of trail, picnic tables, trees, benches, gates, and made impressive financial donations of gardens and gazebos and granite steps.

The Emerald Necklace Trail System was designed as Petawawa's Millennium Partnership Program to explore our heritage, celebrate our achievements, build our future, and leave a lasting legacy. There are eight phases

to the system that unite Petawawa - the Millennium Trail, the Trillium Trail, The Terrace Trail, the Neighbourhood Paths, the Petawawa River White Water Trail, The Ottawa River Waterway, the Soldier's Challenge and the Bike Trail.

## THE MILLENNIUM TRAIL

The Millennium Trail is Phase 1 of the Emerald Necklace Trail. The beautiful green or "emerald" scenery gives the Millennium Trail rare glimpses into the past and how the area must have looked in the time of the early settlers. The trail features outdoor historical storyboards, and numerous log structures demonstrating pioneer building techniques.

## THE TRILLIUM TRAIL

The Trillium Trail is Phase Two of the Trail System. This is a four-season trail that is shown on maps as the "TOP A" snowmobile trail. In the winter, it joins the Trans Canada Trail from Ottawa to North Bay.

## THE TERRACE TRAIL

The Petawawa Terrace Provincial Park contains an extensive trail system. It is best described as a 12 km woodland walk, incorporating numerous interactive panels showcasing Ontario's wildlife and numerous conservation messages.

## NEIGHBOURHOOD PATHS

For Phase Four, the Town of Petawawa has embarked on an ambitious trail system to connect various neighbourhoods and their parks leading to the downtown core.

## THE PETAWAWA WHITE WATER TRAIL

The Petawawa River runs from Algonquin Park to the mighty Ottawa River converging in the heart of Petawawa. Some of the best white water canoeing, kayaking and rafting in the Ottawa Valley is found on the Petawawa River.



## THE OTTAWA RIVER WATERWAY

There are few places in the world that can provide to boaters what the Ottawa Waterway has to offer. The Ottawa River was used as a water highway by Native people and later on by Canada's earliest explorers.

## THE SOLDIER'S CHALLENGE

In 2005 Canadian Forces Base Petawawa will celebrate its 100th anniversary. To commemorate this centennial, Petawawa is building one of the most interesting and challenging fitness courses in Canada based on the standards for various Military Trades.

## BIKE TRAIL

The Town of Petawawa continues to demonstrate its commitment to environmentally friendly forms of transportation and active living. The eighth and final Phase in the Emerald Necklace will feature a bike trail that runs from Petawawa to Pembroke, connecting to the Quebec Trail

and on to the City of Ottawa.

The Town of Petawawa is extremely grateful to the Federal, Provincial, and Municipal Governments, community organizations and individuals who partnered to create this "CPRA award winning treasure" for future generations.

# News from Special Events

By Jodie Watson

The success of special events in the Town of Petawawa can be attributed to wonderful community spirit and the hard work of dedicated volunteers and staff. The past year has been no exception with the success of the 25th Anniversary of Civic Centre Days,



Cabin Fever and a record attendance at this year's Canada Day celebrations.

Looking forward to the coming season, the Parks and Recreation Department will be working hard on many different projects for all ages.

The Youth Flag Football League goes into its second year with an increase in registration. This grassroots program allows children of all ages to take part in physical activity at a minimal cost.

The Civic Centre facility will also host many regional events drawing people from around the province including the Figure Skating Club's inter-club competition, the Upper Ottawa Valley Regional Women's Ringette championships and the valley's Volunteer Service Awards.

Due to the success of the spring Showcase, a fall Showcase and Sportsman's show has been added to the roster which the Civic Centre is pleased to host.

The Parks and Recreation Department is proud to be involved in celebrating the 100th anniversary of CFB Petawawa by placing special emphasis on existing events as well as celebrating new ones. An arts, culture and heritage festival is in the planning stages for next year's celebrations. Watch for February's bridal show and a baby expo for the fall of 2005.

## PETAWAWA PUMPKIN PATCH PARTY

On Saturday, October 16 from 1-3 p.m. come out and enjoy a free family day to celebrate the harvest and the fall season! Look for balloon clowns, face painting, a magician, crazy pumpkin games, crafts, the Civitan Pumpkin Pond and the Lion's Lucky Toss game. Don't forget the competition! Enter your carved pumpkin into categories such as: Heaviest home grown, best dressed pumpkin, most unusual shape and best use of pumpkin in a recipe.

The New Year's Eve Family Party on December 31 from 6-9 p.m. allows all family members to bring in the New Year together! Enjoy live children's entertainment followed by a family dance, horse drawn hayrides, free skating, face painting, clowns and much more! This is a free event, however we will have a drop box for food donations to St. Joseph's Food Bank which would be appreciated.

Cabin Fever 2005 is just around the corner and the volunteer committee will soon be hard at work to bring you the best events and activities to beat the winter blah's! If you are interested in contributing to the festival, either with new event ideas, or as a volunteer you are welcome to contact the office at 687-5678, ext 22. The Cabin Fever schedule of events will be listed at a later date.

The Parks and Recreation department is always accepting new volunteers including high school students needing their 40 hours of community service. We also have contact lists and special events listings as well as information about local activities. The Town of Petawawa website offers a wealth of knowledge for parks and recreation programming. It can be found at [www.petawawa.ca](http://www.petawawa.ca). If you have any questions or comments you can contact the office at 687-5678, ext 22.





Dave Newton

### PARKING CONTROL:

- Parking regulations are now in place. Violations of these regulations may result in a parking ticket and/or towing of the offending vehicle.
- All current no parking signs, intersections, fire hydrants, sidewalks, snow removal and handicap parking regulations will be enforced.
- If you receive a ticket, follow the directions for payment or court action. Payment can be made at the Municipal Offices during normal working hours.

# Bits and Bites

From the desk of Animal Control/By-Law Enforcement

## By-Laws Facts:

Notes from Dave Newton, Animal Control/By-law Officer

- 1. WATERING** of lawns and gardens.
  - Confined to the hours of **6 a.m. to 9 a.m. and 6 p.m. to 9 p.m.** (Under review)
  - The by-law is in effect the entire year
  - Property owners with wells are not subject to the by-law
- 2. POOLS:**
  - all pools over 18 inches deep must be fenced in with an approved fence. Contact the Chief Building Official at the Municipal offices for details.
- 3. ANIMAL CONTROL:**
  - animal tags are to be affixed to the animals collar and on the animal when off of the owner's property
  - all dogs and cats are to have a yearly rabies vaccination
  - all dogs and cats are to be under control at all times when off of the owner's property - this means: on a leash (not exceeding 6 feet), or in a carrier or kennel
  - all incidents where a dog or cat has bitten or scratched a person, other than the owner or owner's family, regardless of severity, is to be reported to the Animal Control Officer
  - tags are to be purchased yearly

**You can contact the Animal Control/Bylaw Officer at his office at 687-8438 or by calling his cell phone number 639-0211.**  
**The complete text of all by-laws can be obtained at the Municipal Offices.**

## FREQUENTLY ASKED QUESTIONS:

- Q: What do I do if my dog or cat goes missing?**  
**A: There are several things that you need to do if your dog or cat is lost or missing.**
- Search the area before contacting authorities. If you are unable to locate your pet, contact the following:
    1. Contact the local shelter (to see if it has been picked up and placed in shelter):
      - Town of Petawawa - Valley Shelter, 732-4891, 495 Biesenthal Rd
      - CFB Petawawa (North and South PMQs) - O.S.P.C.A., 588-4508, Pacquette Rd
      - Laurentian Valley - Animal Control Services, 669 Barron Canyon Rd, 735-2432;
    2. Contact the Animal Control Officer and provide a complete description of the animal (including its name and tag number). For the Town of Petawawa contact 687-8438 or 639-0211.
  - If, after contacting the local animal control officer, you locate your missing animal, do not forget to let us know.
- Q: When do the new dog/cat licences become available and how do I get them?**  
**A: All tags/licences expire on 31 December in the year of issue. There are several ways to obtain your new animal tags:**
- Beginning 1 October - tags/licences available at the Municipal Office (cash or cheque, interac available after 1 January 2005); and
  - Door to door campaign - 2 January to 31 March. Tags also available at the Town offices after 1 January.
  - After 1 April, tags double in cost.

With Council's support designed to create or and encouragement, the increase the health care Committee will determine resources available to all the feasibility of instituting age groups. procedures and activities

# Community Health Committee

Although health care is a provincial responsibility, concerns related to health care frequently are directed to municipal politicians.

The varied age ranges of Town residents create a variety of health care needs and thus require a variety of age-specific health and social care-related resources.

The presence of CFB Petawawa and the number of young adults and children add to the population mix

and increases the specific need for pediatric and obstetrical care.

The Town of Petawawa is served by a medical clinic with a decreasing number of general practioners and the number of other local family physicians available to admit new patients within to their practices continues to decrease.

As a result of these facts, this Committee was created. Consisting of 4 members of Council (including the

Mayor) and 2 members from CFB Petawawa administration personnel, it meets monthly. As is the case with all Council meetings, it is open to the public.

This is its mission statement as adopted by Council.

### Mission Statement

This committee is created to determine the degree to which the general health care needs of the people of the Town of Petawawa are being met and

based on this analysis, the Committee will make recommendations to Council regarding strategies to put in place to help meet identified inadequacies.

## Forestry Committee:

Municipally-owned vacant properties and land tracts are varied as to geographical area. They are also un-inventoried and un-categorized as to their primary composition and degree of ground cover. These areas have the potential to provide an additional source of income to the Town's tax base and could result in additional revenues to support new or existing programmes.

It is known however, that there are some forested areas in the Town's possession, both specifically and unintentionally created, which have been in existence for many years and contain mature but unmanaged forest growth on them.

Current research encourages responsible forest management practices and has proven that unmanaged forests interfere with proper tree growth and species replacement, prevent appropriate and managed culling, and can become the sites

of devastating forest fires.

This committee is composed of 3 members of Council (including the Mayor) and meets as needed.

The following description outlines its purpose.

### Mission Statement

This committee is created to assess the characteristics of forests and tree growth on municipally owned property with the combined purposes of assisting the Town of Petawawa in realizing monies from the sale of wood and the creation of responsible forest management practices.

The Committee will ensure that harvesting practices will be investigated, and policies and procedures will be devised and recommended to ensure that such forest management is environmentally sound, socially and economically responsible and beneficial to the residents of the Town of Petawawa.



## TOWN TIMES EDITORS:

Contents for the articles in this third edition of the *Town Times* have been solicited and collected by the ad hoc "Newspaper Committee", consisting of Mayor Sweet and Councillors Treena Lemay and Cy Steele. All errors in typing, numbering and counting are theirs and they apologize in advance for proof-reading oversights. As novice newspaper people, they continue to learn the vagaries of the fourth estate.

Once again, it is produced with the exceptional assistance, advice and courtesy of the staff at the *Petawawa Post*. All homes in the Town should have received this newspaper as distributed by the *Petawawa Post*. Additional copies are available at the Town offices on 1111 Victoria Street.

Publication costs per copy was 26 cents.





Ann McIntyre

The Petawawa Heritage Society was incorporated in 2003 as a non-profit organization to collect, preserve and promote the history of the Town of Petawawa and its environs. It has taken an active part in promoting the history of the area at all local events. This year the society had display tables at Cabin Fever, Civic Center Days and Showcase 2004.

During Cabin Fever Days, the Heritage Society had a display of prints from Victor Ross's negatives, taken while he had a photog-

## Petawawa Heritage Society in review

raphy business in Petawawa from 1930 to 1950. The photographs taken were of the Town of Petawawa and Camp Petawawa.

In support of the 100th Anniversary of Canadian Forces Base Petawawa in 2005, the Petawawa Heritage Society in partnership with the Canadian Forces Base Petawawa Military Museums is working together to develop a Town of Petawawa gallery, with the support of \$9,700 Trillium Foundation grant.

The Heritage Society has also been asked to coordinate a time capsule for the Base and Town.

The Heritage Society is also assisting the recreation department with research for a second Kiosk at the Point, which will depict the large riverboats that sailed up and down the Ottawa River bringing passengers and

supplies to Petawawa.

This kiosk will also focus on the story of Captain Nazaire Emond, an Algonquin, who became one of the longest serving captains on the river. He claimed that one of his ancestors arrived in Canada with Samuel de Champlain.

Petawawa Heritage Village is a long-term project being developed with the support of the Town.

A tentative architectural plan has been developed showing locations for pioneer school, store, barn, and log shanty. The public has been donating photographs and artifacts to the society that are in the process of being catalogued.

A local artist, Dorothy Tippet, is painting a picture of SS #3 Eichstaedt school to be hung in the new Library. The society hopes that the

school will be the first building in the new village.

In our fund raising endeavors, the second annual Golf tournament was held at Twin Rivers Golf Course. A local sector of business community came out in support of the tournament which helped to make it a great success. The money raised is used to pay for on-going expenses. This year 18 teams entered.

The Heritage Society is also holding a raffle for a "Poor Mans Butler" with mirror and hooks donated by Brian Mohns.

For tickets contact Ann McIntyre 687-5054 or Hank Meister.

For more information about the Society or to make donations, contact Ann McIntyre at 687-5054 or email her at a.mcintyre@sympatico.ca

## PETAWAWA HOUSING CORPORATION'S RIVERVIEW APARTMENTS

The Riverview Apartments are located at 1145 Victoria Street. Specifically rented to seniors only, the complex houses those persons age 60 and up.

Each apartment has a full bathroom, living room, kitchen, bedroom, linen storage and a full pantry. A walk-out balcony complements each apartment.

A common Recreation Room and washers and dryers are available to all tenants.

Parking is available and the well maintained grounds

make the complex an attractive address.

If you are interested in seeing the complex or know anyone who would like to choose a home environment without the worries or problems associated with maintenance, please contact the custodian, Mr. Greg Currie at the residence.

Rental housing applications can be picked up at the Town offices at 1111 Victoria Street.

For further information, please call Sharon at 687-5259.

## SILVER THREADS

All seniors aged 55 and over in the communities of Renfrew County are welcome to join this Club, which is situated in the Lion's Hall at 1163 Victoria Street. Weekly activities are scheduled, including aerobics, bingo, bridge, euchre and craft classes. There are also several special events throughout the year such as dinners, a Remembrance Day service, a Christmas Concert with the Legion Band, day trips, and teas. Membership and activities fees are nominal.

For more information, call the Club (687-6574) or Marianne Holman (687-5150)

## COMMUNITY POLICING COMMITTEE

The motto of the committee is - Crime Prevention Through Community Involvement. This very active civilian group of interested citizens works closely with the OPP to promote a safe and crime free community.

Through a variety of programmes, the committee encourages residents of all ages to become aware of ways to promote their own safety, and ultimately their quality of life.

Persons interested in joining this committee should contact president Bob Howell at 687-1632.

## TOWN OF PETAWAWA ACCESSIBILITY ADVISORY COMMITTEE

Under the Ontarians with Disabilities Act, 2001, all municipalities of 10,000 residents or more must have an Accessibility Advisory Committee to advise council on how to make the municipality more accessible to people with disabilities.

For more information about our committee, please call Cy Steele at 687-4338.

(Back left to right) Earl Andrews, councillor Cy Steele, Karen Roosen, (front left to right) Dolly Currie and Kaley Roosen.



## Ottawa Valley Waste Recovery Centre



By: Elizabeth Kenrick,  
Public Education Co-ordinator

The Ottawa Valley Waste Recovery Centre (OVWRC) is a state of the art waste management facility located in the Township of Laurentian Valley and began operation in January 2002. It includes a Material Recovery Facility, a Centralized Composting Facility, a Leaf and Yard Waste Windrow pad, a Construction and Demolition Waste Recycling area, a permanent Household Hazardous Waste Depot, two waste oil transfer stations and a Landfill. The Centre serves a population of 40,000 and its goal is to reach a diversion rate of 65%.

The Centre's mission statement is "to walk lightly on the environment". A participation study in the summer of 2002 has shown that our community has assisted the Centre in honouring its mission statement. On average 65% of us use the blue box for container and fibre recycling. Green cart participation is 62% in all communities with a slightly lower usage in rural areas which is not uncommon since these residents have been backyard composting for some time. Curbside surveys were conducted to see if participating residents are properly sorting their recyclable or organic material before placing it out for collection. The results are exceptional. Both the blue box and green cart material are properly sorted 92% of the time.

As of December 11th, 2002 approximately 7,550,000 kilograms of waste has been diverted from landfill. This is comprised of 3,450,000 kilograms of organics, 2,700,000 kilograms of recyclables, and 1,400,000 kilograms of construction and demolition material have been diverted from the landfill.

While we are doing well, the numbers show we can do better. The more residents that participate in the program the longer we can make our landfill last. As well, here are few common issues and resolutions:

- Paper coffee cups (like Tim Horton's), frozen juice cans and Pringle chip cans are not recyclable and must be put in the regular garbage
- Milk/juice cartons and drinking juice boxes are container recyclables not paper
- Styrofoam should not go in the green cart. If clean and it has a triangle with a number 6, it can go with the container recyclables
- No plastic is to be put in the green cart since plastic does not compost! Plastic bags of food scraps become waste during the process.
- Clothing cannot go in the green cart. If it is usable/saleable clothing, it can be donated to your local thrift store or it can be placed in a clear bag and put out with your recyclables on either collection week.

All in all residents are doing exceptionally well for a brand new program. Keep up the good work and let's help each other Walk Lightly on the Environment!

If you have any questions regarding the Ottawa Valley Waste Recovery Centre please call 613-735-7537.



## TOWN OF PETAWAWA FIRE DEPARTMENT FACTS

Can you believe that more fires begin in the kitchen with cooking equipment? Here are some preventative tips:

### STOVE FIRES:

- never leave food cooking unattended
- avoid wearing loose clothing while cooking
- if a grease fire starts in a pan, put on an oven mitt and smother the flames by carefully sliding a lid onto the pan
- NEVER use water on a grease fire!

### OVEN FIRES:

- keep oven clean - built up grease and food particles can easily ignite
- keep dish towels, newspapers, grocery bags, etc. away from the oven
- in the case of an "oven fire"
- turn off the heat and keep the door closed to prevent flames from burning you and your clothes.

### MICROWAVE FIRES:

- microwave ovens are fairly safe, but twist ties or other metal material may cause a fire.
- in the case of a microwave fire, unplug the appliance and do not open the door until the flames are out. Have microwave serviced



**Fire Chief Larry Charette** before reusing.

### "FIRE" - NOW WHAT?

- Teach children to dial 9-1-1
- If your clothes catch on fire, STOP, DROP AND ROLL
- Families should practice these techniques

### "GET OUT, STAY OUT AND STAY ALIVE"

First, make an escape plan. Plan how your family will get out of your home in the case of fire.

The following is a handy checklist of things to prepare you in the case of fire:

- Smoke Detector - A smoke detector is your best alarm. A smoke detector will buy you time to make your escape.
- Have a smoke detector properly installed on each level of your home.
- Change the batteries when the clocks change for daylight savings in the spring and fall (every 6 months).
- Two Ways Out - Every room should have two ways out: the door and a window. Ensure the window can always be opened.
- If you live in a 2 storey home, a roll-up fire escape ladder should be provided for each bedroom.

- Get Out Fast - Once the alarm has sounded, do not stop to dress, gather valuables. Toys or even the family pet. **FIRE MOVES FAST!!**
- Never Hide - Upon smelling smoke or seeing fire, some people will hide under a bed or in a closet. Remember, you can not hide from fire, but you can escape!
- Test Doors Before Opening Them - Feel the door and look for smoke

seeping around the edges. Open it slowly and be prepared to slam it shut if heat or smoke rushes in.

- Crawl - If there is a lot of smoke, drop to your hands and knees and crawl low under the smoke to the nearest exit.
- Set an Outside Meeting Place - Decide in advance of a meeting place outside and away from the house. Make a rule: Once

Out...Stay Out! Never return to a burning building.

- Practice - Rehearse your escape plan often. Practicing fire drills at home will allow you to do the right thing in a real emergency.

### REMEMBER:

Fire prevention is something in which everyone can participate. Take the time to inspect your home for possible safety hazards and encourage

the whole family to help.

It is very important to know what to do should a fire occur. More importantly is the prevention of a fire before it starts.

Keep all smoke detectors working and rehearse your escape plan with the whole family and stay alive.

You have approximately 3 minutes to escape safely from a fire after the detector alarms.

## FREQUENTLY ASKED QUESTIONS ...

Q: Where do I get an OHIP card?

A: An OHIP card is available through: 1-888-314-4442

Q: What is the population of the Town?

A: 15,113 (North Townsite: 4,279, South Townsite: 1,842, Town: 8,992)

Q: Who can I call regarding school issues such as busing, etc.

A: Renfrew County District School Board: 1270 Pembroke Street West, Pembroke, Ontario, K8A 4G4. Tel: 735-0151  
• Renfrew County Catholic District School Board: 499 Pembroke Street West, Pembroke, Ontario, K8A 5P1. Tel: 735-1031

Q: What is the phone number for my MP and MPP

A: Cheryl Gallant, MP: 732-4404  
John Yakubuskie, MPP: 735-6627

Q: Who can I call to discuss the Town drinking water in my neighbourhood?

A: OCWA (Ontario Clean Water Agency): 687-2141. For inquiries related to other or well-supplied water, contact the Renfrew County & District Health Unit at 735-8666

Q: Does my neighbourhood receive leaf pick-up?

A: There is a bulk garbage and leaf pick up every spring and fall. Details are published in all local newspapers leading up to the dates and specify details of the pick up.

Q: My street light is burnt out or doesn't work. How do I report this?

A: Report any street light outages to municipal staff. You will need to provide the pole number and location of the pole.

Q: Who do I contact regarding social assistance / welfare?

A: Ontario Works, 141 Lake Street, Pembroke, Ontario, K8A 5L8. Tel: 732-2601

Q: I am a new resident. Where can I get a blue box?

A: Blue boxes may be obtained from the Town of Petawawa municipal office. The fee is \$6.00 per box (blue boxes are meant to be kept by the purchaser).

Q: When will my garbage be picked up in the event of a holiday?

A: With the exception of Christmas and New Year's days, garbage pickup does not alter on holidays. Any changes are published in all local papers leading up to the holiday season.

Q: What are the hours of the Ottawa Valley Waste Recovery Centre?

A: At present, the hours are Mon - Fri 7:30 a.m. - 4:00 p.m. and Sat. 7:30 a.m. - 12:00 p.m.

Q: How do I dispose of a large item such as a stove, fridge, washing machine, etc.?

A: At present, these items may be disposed of at the Ottawa Valley Waste Recovery Centre located on Wito Station Road in the Township of Laurentian Valley. (Take B-Line Road south from Highway 417 and turn right on Wito Station Road - plenty of signage). Tipping fees will be applied at the site.

Q: Does the Town recognize special wedding anniversaries or birthdays?

A: The Town recognizes Petawawa residents celebrating 50th, 55th, and 60th wedding anniversaries and or 90th, 95th and 100th + birthdays with a certificate from the Mayor's office. Requests for recognition should be forwarded, in writing, to the municipal office at least 3 weeks prior to the event.

Q: Can we take wedding pictures at Centennial Park?

A: With pleasure. No permits or fees are necessary but a policy of first come - first served is in effect.

Q: Where can I get a passport?

A: Passport applications may be obtained from the local post office or most travel agencies. To expedite processing, you may drop your completed application off at your local member of parliament's office (Cheryl Gallant). Applications are usually processed and returned within 10 days. However, since the events of September 11th, processing takes between 20 - 25 days. In the event of an emergency, please include a copy of your travel itinerary (airline tickets, etceteras). Hand deliver your application in an unsealed envelope to the local constituency office.

Q: Do I have to get my cat or dog registered?

A: Yes - according to By-Law # 174/2001. Dog and Cat licenses may be obtained from the municipal office or through the Animal Control Officer at 639 - 0211.

Fees BEFORE April 1, 2003 are as follows:

Sterilized dog:	\$15.00
Unsterilized dog:	\$20.00
Sterilized cat:	\$5.00
Unsterilized cat:	\$10.00

Proof of rabies vaccine is required.

Q: Who is responsible for picking up after dogs?

A: The Animal Control By-Law states that dog owners or their handler are responsible for cleaning up after their dog. The fine for a first offence is \$65.00.

Q: How quickly will my street be sanded or plowed after a snowfall?

A: During or after a snowfall, major roads and collector routes are cleared first to ensure that emergency vehicles like fire trucks and ambulances can travel safely. All other Town roads are cleared and or salted within 24 hours of a snowfall. With heavy snowfalls or successive storms, the timing may have to be extended depending on the severity of the snowfall. If you require more information, please contact the Public works Department at 687-2692.

Q: Where can I get information about starting a small business?

A: The Economic Development office would be pleased to assist you. Please call the Town Office at 687- 5536.

Q: What is the address of the Town Municipal Offices?

A: The Town of Petawawa, 1111 Victoria Street, Petawawa, Ontario K8H 2E6.  
Open Mon - Fri 8:30 am - 4:30 pm  
Telephone - 613 -687-5536

Q: Where do I get a marriage license?

A: City of Pembroke or Town of Deep River Municipal Offices.

Q: Where do I get applications for a birth certificate, SIN Number, CPP or Passport?

A: Town of Petawawa municipal office.

Q: Where do I find a Commissioner of Oaths?

A: The Town of Petawawa presently has 4 employees who can act as Commissioners of Oaths.

Q: Is there a fee to have a document commissioned?

A: No.

Q: Where do I find a Notary Public?

A: Only lawyers in the Province of Ontario are Notary Publics.

Q: Can I pay my property taxes on-line?

A: Yes. They are payable through telephone banking with the following financial institutions: Bank of Montreal, C.S. Co-Op, Northern Credit Union, RBC Royal Bank, Scotia Bank and TD Canada Trust.

## SMOKE ALARM PROGRAM

The Town of Petawawa fire fighters have been conducting a voluntary home smoke alarm program again this year. The following is a startling statistic: of 120 homes checked, 97 had working alarms, 10 had no alarms at all and 13 had alarms that were not working due to dead batteries - that is close to 20 per cent of homes within the Town not having working smoke alarms - **EVEN THOUGH IT IS THE LAW!** The penalty for not having a working alarm is \$235.00. The irony is that those 20% would not have a chance of survival if a fire occurred during the night.

### DO YOU WANT YOURSELF OR YOUR FAMILY MEMBERS TO SURVIVE A FIRE?

Think about it.

You have only 3 minutes to escape once a fire occurs - a very short time!

**Check your alarms now, right now!!**

